



STYLISH CLUB

.the club

“be STYLISH...

Stylish Club stands out as a post-modern brand built on references from the past, while preserving the characteristics of a contemporary label within its aesthetic genesis. We focus on constantly rediscovering distinctive connections between different objects and materials.

At Stylish Club we direct our philosophy at cultural plurality, while simultaneously ensuring the expression of personal identity in our club. We believe that each member of our "Club" is a unique individual working towards the creation of products and environments that evoke a sense of individual and collective identity, of belonging to a distinct and sophisticated club and community.



Stylish Club combines tradition and technology, thus creating a symbiotic relationship of perfect harmony between the artisanal and secular techniques of joinery and carpentry, as well as the advantages inherent to the use of new technologies in the production of furniture.

We develop prestigious furniture through the creation of a differentiated design, inspired by a sophisticated and luxurious lifestyle, where tradition is constantly reinterpreted under contemporary and innovative frames.

.the club

Paying special attention to the environment, as well as to every material and detail, Stylish Club adds a touch of luxury to the art of living, by conceptualizing unique interiors imbued with style.

CONTENT

Entry Hall	12 , 130 , 154 , 178
Living Room	16 , 64 , 72 , 104 , 120 , 158 , 182
Dining Room	30 , 82 , 110 , 134 , 190
Bedroom	38 , 90 , 142 , 164 , 198
Office	50 , 58 , 98



cosmopolitan villa









HIS & HER are complementary collections, whose aim is to affirm the brand's aesthetic.

This product is intended for a demanding public, attentive to trends, and has a differentiating identity for a specific end consumer.







These two collections are inspired by artistic movements from the beginning of the 20th century, namely in the aesthetic plurality that spread throughout Europe of Art Nouveau, and later in Art Deco, as well as in international style that has developed around the world.







SCF.HE02 - HER TV CABINET - 2200*550*H600 (mm)
SCF.HE03 - HER COFFEE TABLE - LOWER TABLE 700*1200*H250 (mm) / HIGH TABLE 1260*1015*H450 (mm)



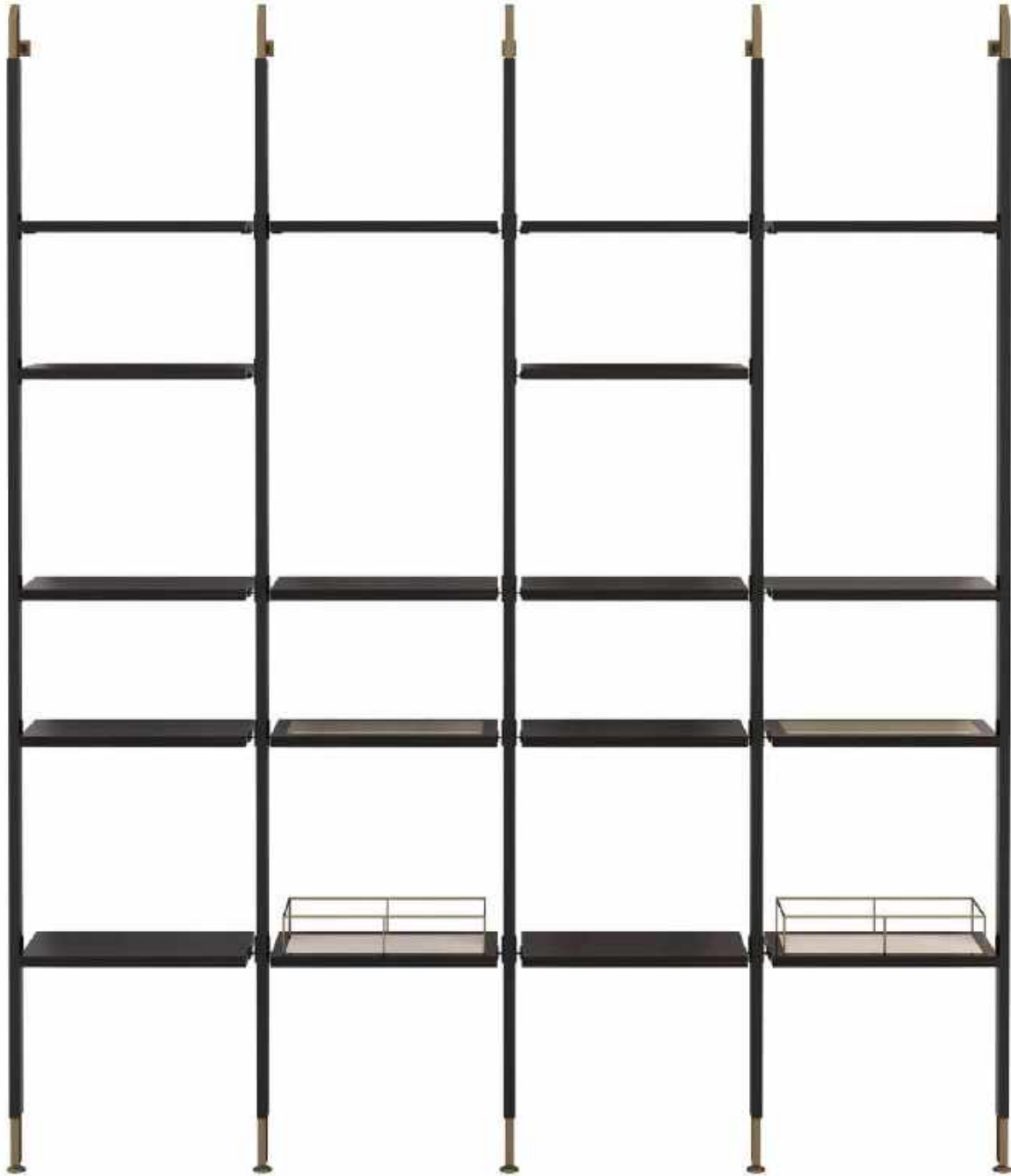
SCF.H114 - HIS BAR CABINET - 900*450*H1700 (mm)







SCF.HE05 - HER LOW CONSOLE - 1800*420*H650 (mm)



SCF.HI22 - HIS SECTIONAL BOOKSHELF - ADJUSTABLE HEIGHT FROM 2450 TO 3600 (mm)







SCF.HI04 - HIS SIDE TABLE - SMALL 400*600*H500 / MEDIUM 520*560*H560 / LARGE 600*500*H600 (mm)









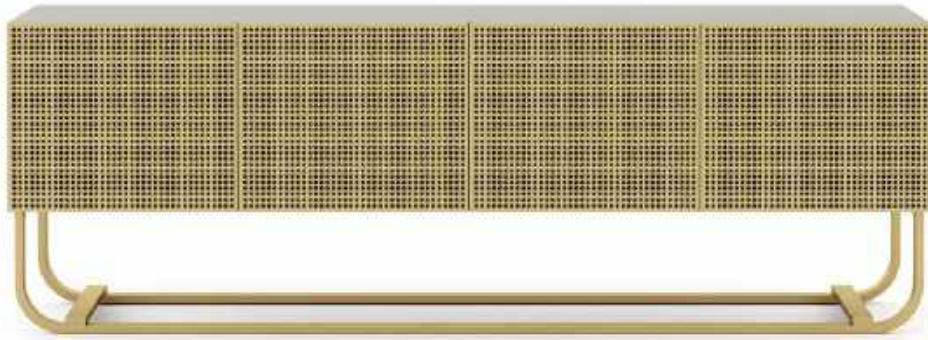




The unique zig-zag armchair was created by Lina Bo Bardi in partnership with Giancarlo Piretti, in 1949, for the Teatro Cultura Artística of São Paulo (Brazil) and manufactured by Studio d'arte Palma.

This armchair was the object of inspiration for the creation of the dining chair of the HER collection.





SCF.H110 - HIS SIDEBOARD - SMALL 1800*500*H850 (mm)











SCF.HE15 - HER BED - AVAILABLE IN DOUBLE, QUEEN AND KING SIZE - HEADBOARD HEIGHT 1100 mm



SCF.HE15 - HER BED - AVAILABLE WITHOUT HEADBOARD SIDES

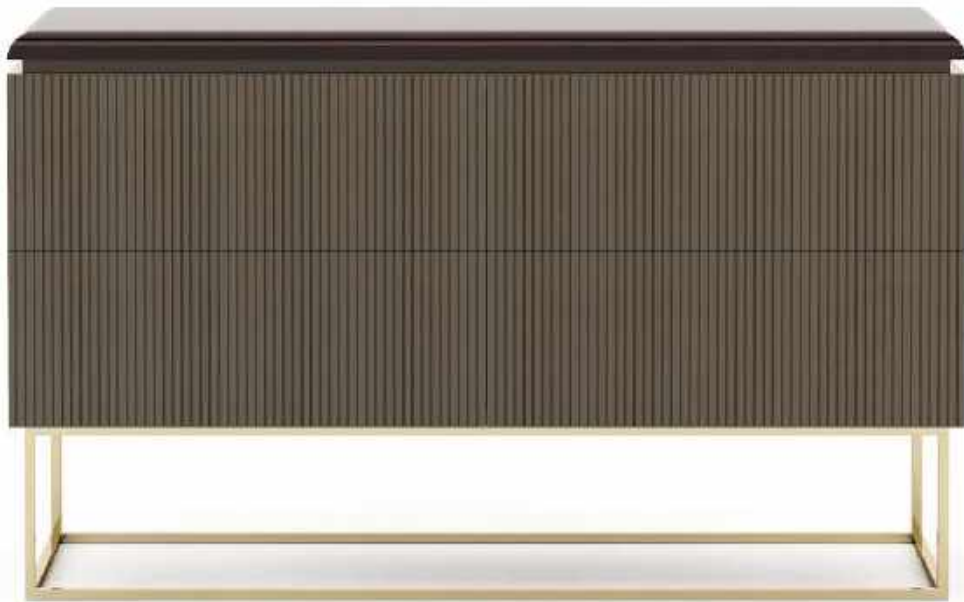


The São Paulo Art Museum (MASP),
opened on November 7, 1968,
is a building designed by
Italian-Brazilian architect Lina Bo Bardi.

Famous for the span of more than 70 meters
that extends through the pillars,
it is one of the main inspirations of
the HER collection,
giving rise to the first piece of the collection,
the night table.



SCF.HE16 - HER NIGHT TABLE - SMALL 500*452*H580 (mm)



SCF.HE17 - HER CHEST OF DRAWERS - SMALL 1350*530*H810 (mm)







SCF.HE25 - HER BENCH - 870*450*H450 (mm)







The Palácio dos Arcos (Palace of Arches, in Portuguese), was inaugurated on April 20, 1970, and is still the headquarters of the Ministry of Foreign Affairs of Brazil, located in Brasília.

It is considered a masterpiece by architect Oscar Niemeyer.

Palácio dos Arcos was the first name given to the building, due to the arches of the facade.

This was a source of inspiration in the development of the dressing table HER.



SCF.HE20 - HER DRESSING TABLE - 1700*660*H1750 (760) (mm)









SCF.HI07 - HIS SECTIONAL SOFA - 1680*1050*H700 (440) (mm)





The AEG turbine plant was built around 1909, at Huttenstrabe 12-16, in the Moabit district of Berlin.

It is the best-known example of industrial architecture.

It was a bold and pioneering move in the world that would have a lasting impact on architecture as a whole.

This magnificent work by Peter Behrens was the inspirational source in the development of the HER desk.





SCF.F12.2 - FORTUNE CHAIR - 580*620*H800 (440) (mm)







sophisticated lifestyle







SCF.HE04 - HIS SIDE TABLE - 550*450*H650 (mm)
SCF.HI03 - HIS COFFEE TABLE - LARGE 1000*1000*H360 (mm)





ungender aesthetics













SCF.HI02 - HIS TV CABINET - 2000*540*H550 (mm)









SCF.HE22 - HER BOOKCASE - 650*430*H1800 (mm)

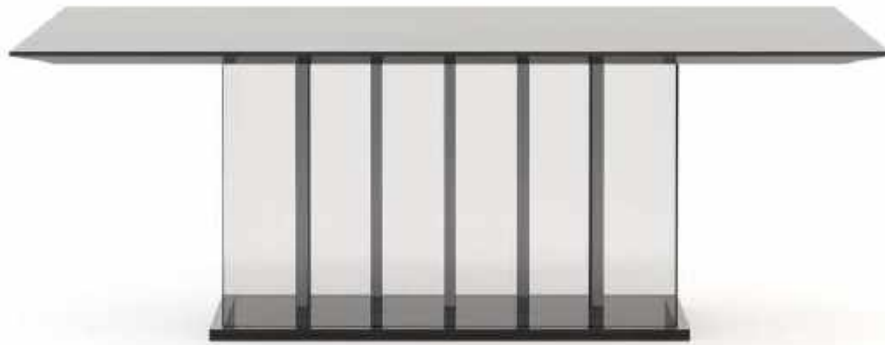








SCF.HE10 - HER SIDEBOARD - MEDIUM 2000*540*H780 (mm)



SCF.H11 - HIS DINING TABLE - SMALL 2100*1200*H760 (mm)







SCF.HI12.2 - HIS CHAIR - 640*585*H850 (mm)













SCF.H116 - HIS NIGHT TABLE - LARGE 700*450*H580 (mm)













SCF.HE21 - HER DESK - 1600*650*H760 (mm)



eclectic spaces









SCF.HI09 - HIS ARMCHAIR - 800*850*H700 (mm)





SCF.F03 - FORTUNE COFFEE TABLE - LARGE 1000*600*H250 / MEDIUM 800*800*H250 / SMALL 600*600*H450 (mm)

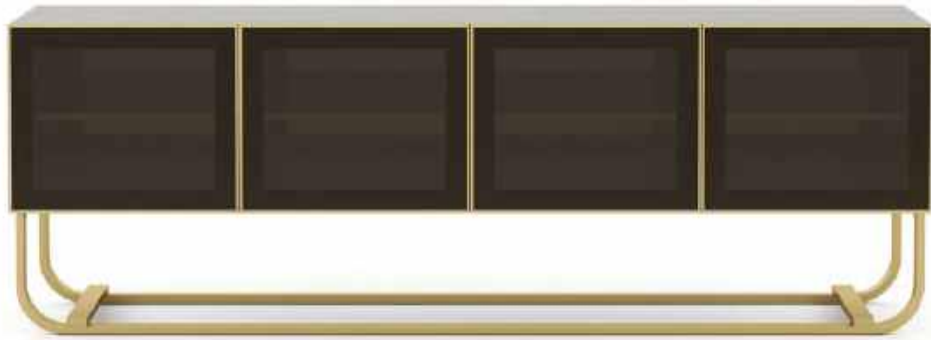












SCF.H110 - HIS SIDEBOARD - 1800*500*H850 (mm)







warm feeling









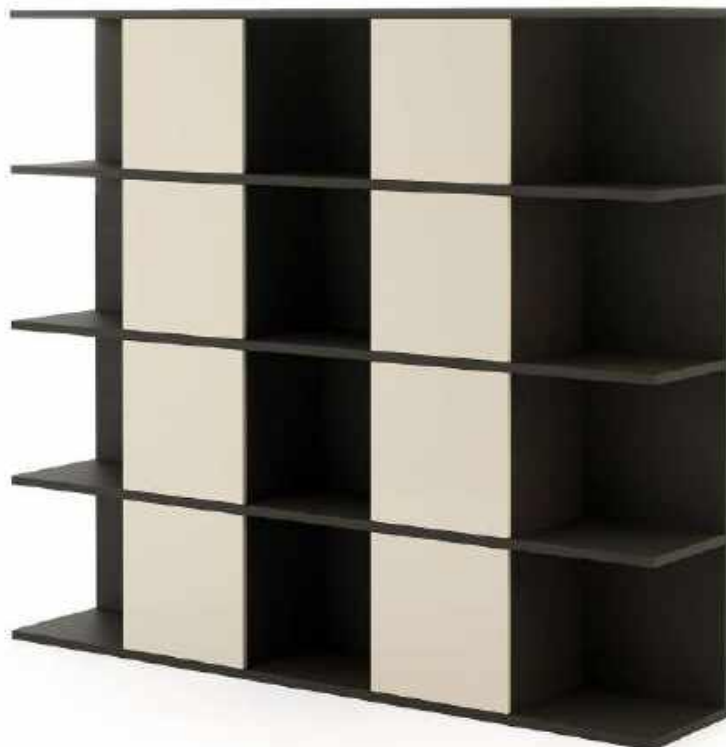
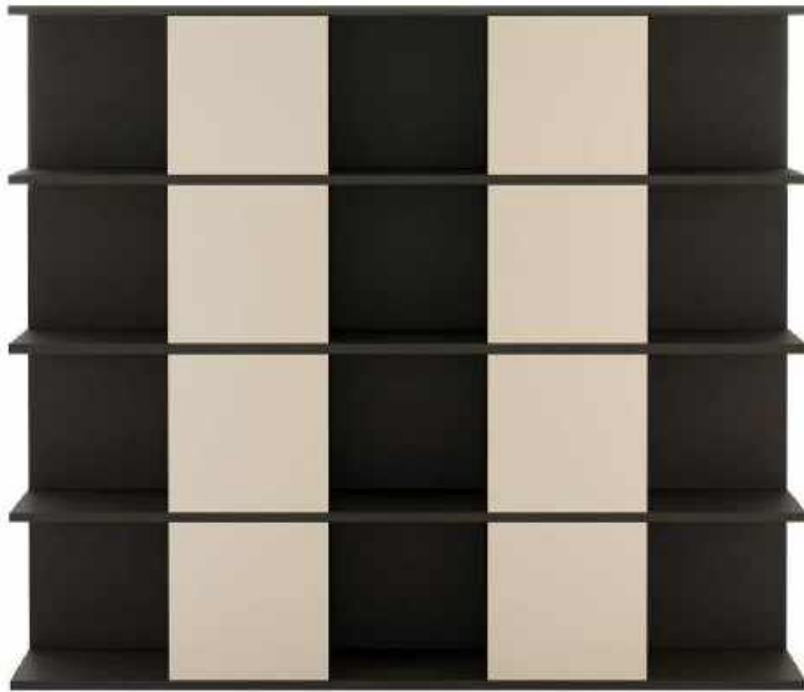
SCF.CL07 - CLUB SOFA - 3 SEATER - 2200*890*H780 (440) (mm)



SCF.B03 - BRIDGE COFFEE TABLE - MEDIUM 1000*1000*H450 (mm)
SCF.F04 - FORTUNE SIDE TABLE - LARGE 800*600*H600 / MEDIUM 600*600*H500 / SMALL 520*520*H400 (mm)







SCF.M22 - MANHATTAN SECTIONAL BOOKCASE - AS PRESENTED 2500*470*H2200 (mm)



plural identity





The Manhattan collection is inspired by the New York “Neighborhood”.

This area is characterized by the urban and cosmopolitan lifestyle combined with modernity and sophistication.

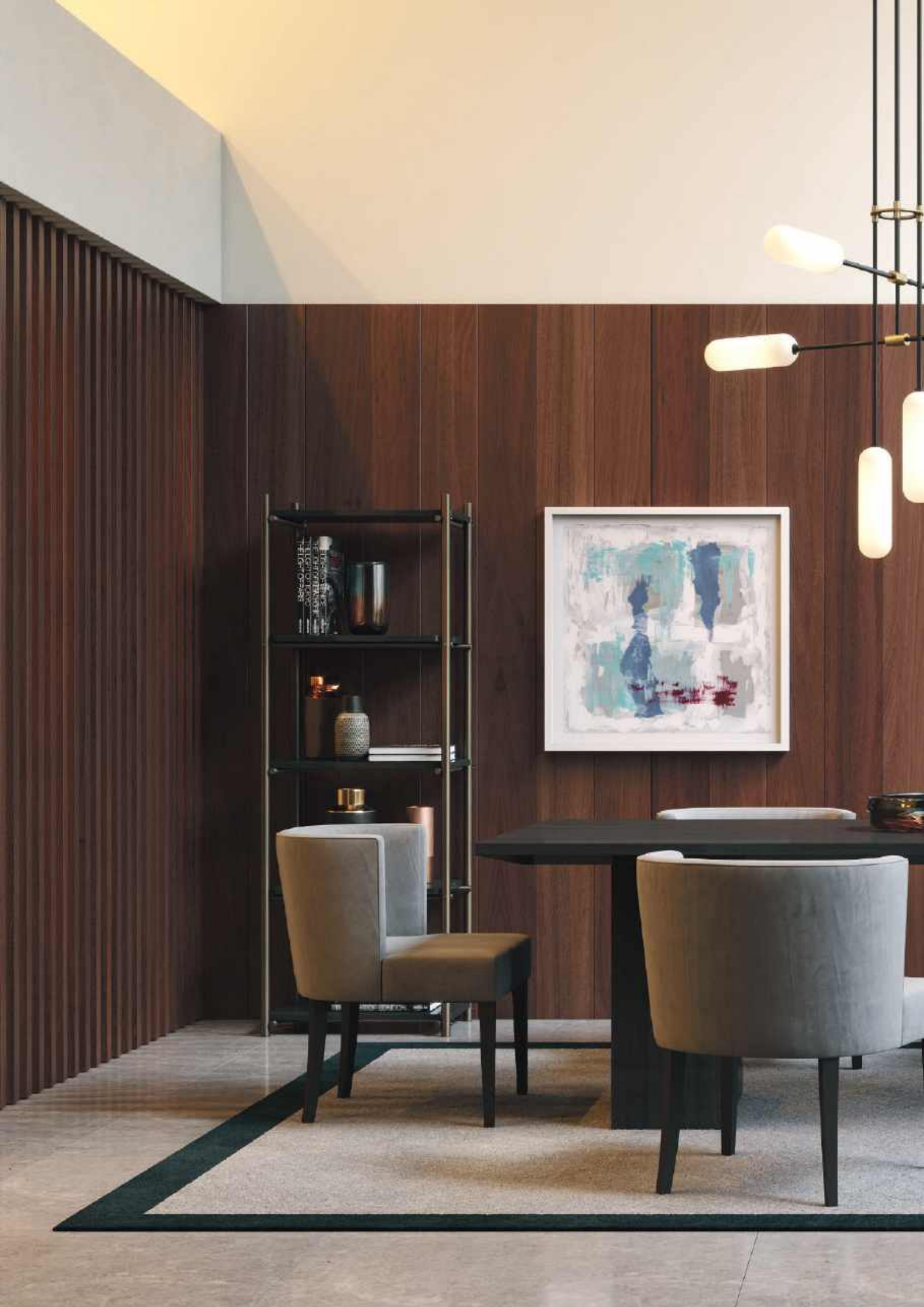
These features are highlighted in this collection, which exhales glamour and elegance through the details.

The Manhattan collection presents itself with a straight and rhythmic silhouette on both horizontal and vertical lines, invoking the constructions in height, provided by the technical/technological developments of modern architecture.



SCF.M01 - MANHATTAN CONSOLE - 1600*400*H850 (mm)









SCF.M11 - MANHATTAN DINING TABLE - MEDIUM 2100*1200*H760 (mm)







SCF.ML12 - MILOS CHAIR - 620*580*H800 (450) (mm)



SCF.M10 - MANHATTAN SIDEBOARD - MEDIUM 2200*540*H900 (mm)









SCF.S15 - SUBLIME BED - AVAILABLE IN DOUBLE, QUEEN AND KING SIZE - HEADBOARD HEIGHT 1600 (mm)

Despite the generous proportions of the tops, due to their reduced height, the tables are not invasive in the living space, but function as pleasantly decorative and functional island elements.

The family is completed by squared items that feature drawers or a void space, which is enhanced by decorative metal trims.







SCF.M17 - MANHATTAN CHEST OF DRAWERS - LARGE 1800*520*H810 (mm)



SCF.M21 - MANHATTAN DEKS - 1600*650*H760 (mm)
SCF.F12 - FORTUNE CHAIR - 690*610*H860 (440) (mm)



The Fortune chair epitomizes the essence of contemporary design and the memory of tradition, finding perfect balance in a futuristic orientation that springs from the seeds of inherent know-how.





SCF.V09 - VOILIER ARMCHAIR - 800*650*H670 (440) (mm)



unique character



















SCF.K09 - KENSINGTON ARMCHAIR - 840*680*H710 (mm)
SCF.H04 - HERITAGE SIDE TABLE - LARGE 600*600*H600 | MEDIUM 520*600*H560 | SMALL 440*600*H520 (mm)



A side table was created with an inherently refined design and achieved through the skillful combination of sophisticated and classic details. The top of the large table is completed by a mirror, while the structure of the large, medium and small tables are available in lacquered or wood veneers. The heritage side table is sold separately.











SCF.F15 - FORTUNE BED - AVAILABLE IN DOUBLE, QUEEN AND KING SIZE - HEADBOARD HEIGHT 1150 (mm)







SCF.S16 - SUBLIME NIGHT TABLE - MEDIUM 700*450*H580 (mm)



SCF.S17 - SUBLIME CHEST OF DRAWERS - SMALL 1350*520*H810 (mm)





SCF.PA09 - PASSIONE ARMCHAIR - 950*750*H880 (420) (mm)





luxury living



















SCF.E03 - EMPIRE COFFEE TABLE - MEDIUM 1200*600*H450 (mm)
SCF.S04 - SUBLIME SIDE TABLE - 600*600*H600 (mm)



The apparent simple shape of the Empire coffee table and its rational, accurate design conceals a piece that is far more intricately structured than meets the eye.

The Empire coffee table is available in a range of different sizes and finishings, to perfectly fit into any ambiance, from living rooms, and bedroom suits, to offices.





SCF.F09 - FORTUNE ARMCHAIR - 800*750*H700 (440) (mm)







SCF.V11 - VOILIER DINING TABLE - MEDIUM 2100*1200*H760 (mm)

















SCF.V15 - VOILIER BED - AVAILABLE IN DOUBLE, QUEEN AND KING SIZE - HEADBOARD HEIGHT 1100 (mm)





The classic signature and language are clearly visible in the design of the Heritage collection.

The Heritage collection is based on the transition from the beginning of the Stylish Club brand to what it represents today: luxury, elegance and exclusivity.

It is inspired by a heritage of the classic, which continues to stand out in every detail of this collection.









...join the CLUB”



HEADQUARTERS

Travessa do Calvário 215,
Zona Industrial Arroteias
4595-106 Frazão - Paços de Ferreira,
PORTUGAL

CONTACTS

T: +351 255 865 917

M: +351 918 631 568

E: office@madetolast.pt

VISIT US

stylishclub.pt

SOCIAL MEDIA

[facebook](#)

[instagram](#)

[linkedin](#)

[whatsapp](#)

© 2021 | **STYLISH CLUB. ALL RIGHTS RESERVED**

All of Stylish Club's Collections are manufactured 100% in Portugal using top-class components and materials.

Stylish Club reserves the rights at all time to apply modifications for the functional or qualitative improvement of its products. Texts and drawings present in this brochure have a divulgative purpose: for every technical and dimensional aspect please refer to the company's price lists and their relative updatings. The colour and material samples have an indicative value.

